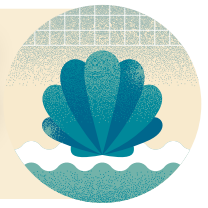


# ISLAND VIBES

the Official Newsletter for the City of South Padre Island



## UPCOMING EVENTS

### Saturday Recycling

Date: Every Saturday  
 Time: 8:00 a.m. to 11:00 a.m.  
 Where: 4501 Padre Blvd  
[Click here](#) for event details.

### SPI Crawfish Festival

Date: April 12th  
 Starts: 5:00 p.m.  
 Where: SPI Convention Center  
[Click here](#) for event details.

### 41st Causeway Run & Fitness Walk

Date: April 12th at 7:00 a.m.  
 Where: Port Isabel Event & Cultural Center  
[Click here](#) for event details.

### Pinch Pot Clay Workshop

Date: April 16th & 30th  
 Starts: 4:00 p.m. - 6:00 p.m.  
 Where: Art Business Incubator  
[Click here](#) for event details.

### Intocable Concert

Date: April 19th  
 Starts: 3:00 p.m. - 11:00 p.m.  
 Where: SPI Convention Center  
[Click here](#) for event details.

There's no shortage of events happening on South Padre Island [Click here](#) to join the fun and see what's happening.

## UPCOMING MEETINGS

### Tuesday • April 15th

- 9:00 AM • Economic Development Corporation
- 2:00 PM • Special Events Committee
- 3:00 PM • Shoreline Task Force

### Wednesday • April 16th

- 5:00 PM • Substandard Structure Review Board
- 5:30 PM • City Council Regular Meeting

View upcoming meetings, live stream in session, & watch archived meetings [here](#).



## May 3<sup>rd</sup> Cameron County Special Election Info

View the early voting schedule below for the Cameron County Special Election at the South Padre Island Community Center at 4501 Padre Blvd.

[Click here](#) to view your sample ballot for the special election.

Date	Time	Date	Time
Tue., Apr. 22	9:00 AM - 7:00 PM	Sat., Apr. 26	10:00 AM - 5:00 PM
Wed., Apr. 23	9:00 AM - 7:00 PM	Mon., Apr. 28	9:00 AM - 7:00 PM
Thu., Apr. 24	9:00 AM - 7:00 PM	Tue., Apr. 29	9:00 AM - 7:00 PM
Fri., Apr. 25	9:00 AM - 7:00 PM		



## Pet of the Week

Mars is a 4-6 month-old male pup who was abandoned by his human. Mars is loving, playful, crate-trained, and is working on his commands.

Meet all the animals at FOAR, on 4908 Padre Blvd., from 10:00 a.m.- 5:00 p.m. Complete the adoption app [here](#).

## Ready to Register?

As the school year comes to an end a new one soon follows. View below to register Port Isabel ISD future student.

- [Returning Student](#)
- [New Student](#)
- [Pre-K & Kinder Student](#)

## Public Works Cares

To report any issues or other concerns with streets, parks, and green spaces please email [pwcares@myspi.org](mailto:pwcares@myspi.org).

## #Join Team SPI

The City of SPI is hiring! [Apply](#) to become a part of our team today! The City offers great benefits like medical, retirement, and more!

## Important Safety Links

The City is encouraging individuals who require special assistance during emergencies to enroll in its Special Needs Registry.



Scan to view more.

Sign up for "RAVE" the City's Emergency Notification System to stay up to date during emergencies.



Scan to view more.

As a resident, you can provide details on your properties and more that will be directed to your local law enforcement!



Scan to view more.

If you live and/or own property on South Padre Island register your vehicle for a re-entry sticker.



Scan to view more.

# Community Events

## Earth Day Beach Clean Up

A sandtastic opportunity to come out with friends and family to clean up the beach! Protect our environment and preserve the beauty of our beaches – your contribution makes a difference! [Click here](#) to sign up!



## Earth Day E-Waste Recycling

This Earth Day, seize the opportunity to properly dispose of your e-waste! Questions? Contact the Environmental Health Service Department at (956) 761-8123.

Automotive Components, Batteries, Cell Phones, Circuit Boards, Copiers, External Storage Devices, Hard Drives, Hubs, Media Players, Motherboards, Network Equipment, PDAs, Power Cords, Routers/Switches, and Security Equipment.

**Location:** SPI Community Center at 4501 Padre Blvd.

**Date:** Saturday, April 19<sup>th</sup> from 8:00 a.m. - 11:00 a.m.

## Adopt-a-Beach & Coastal Roundup

Want to make a difference while enjoying the beach? Volunteer with Adopt-a-Beach and help us clean and protect paradise! You can also stop by the Coastal Roundup event on the same day!

[Click here - Coastal Roundup](#)

**Date:** Saturday, April 26<sup>th</sup> from 10:00 a.m. - 4:00 p.m.

**Location:** Isla Blanca Park Pavilion at Channel View Rd, South Padre Island.

[Click here - Adopt-a-Beach](#)

**Date:** Saturday, April 26<sup>th</sup> from 8:30 a.m. - 12:00 p.m.

**Location:** Beach Access #8 White Cap Circle between East Swordfish St. and East Red Snapper St.



**Location:** Beach Access #8 White Cap Circle between East Swordfish St. and East Red Snapper St.

**Date:** Tuesday, April 22<sup>nd</sup> at 3:00 p.m.

## Birding Spring Migration

The South Padre Island Birding, Nature Center & Alligator Sanctuary will have a Spring Migration Celebration in honor of Earth Day! [Click here](#) to view more.

**Location:** SPI Birding, Nature Center & Alligator Sanctuary 6801 Padre Boulevard

**Date:** Saturday, April 19<sup>th</sup> from 8:30 a.m. - 11:00 a.m. and 2:00 p.m. - 4:00 p.m.

## Arbor Day Tree Planting

Calling all green thumbs and nature lovers! Get ready to dig in and make a difference! Join us for a day of planting and community at the Annual Arbor Day celebration! Questions?

Contact the Parks & Recreation Manager, Debbie Huffman at [dhuffman@myspi.org](mailto:dhuffman@myspi.org).

**Location:** Turtle Park

at East Morningside Dr.

**Date:** Saturday, April 25<sup>th</sup> at 10:00 a.m.

