

Bay Street Endings

Reuben Trevino
Coastal Resources Manager

1/3/12



Clipper Lane

- Boat Ramp owned by Parrot Eyes



W. Cora Lee



W. Cora Lee

- Benches were purchased by residents and installed by City
- Planters: Yes (2)
- Maint. Contract: Yes
- Bulkhead: No
- Rip rap: Yes
- Access to Bay: Yes
 - Steps to water

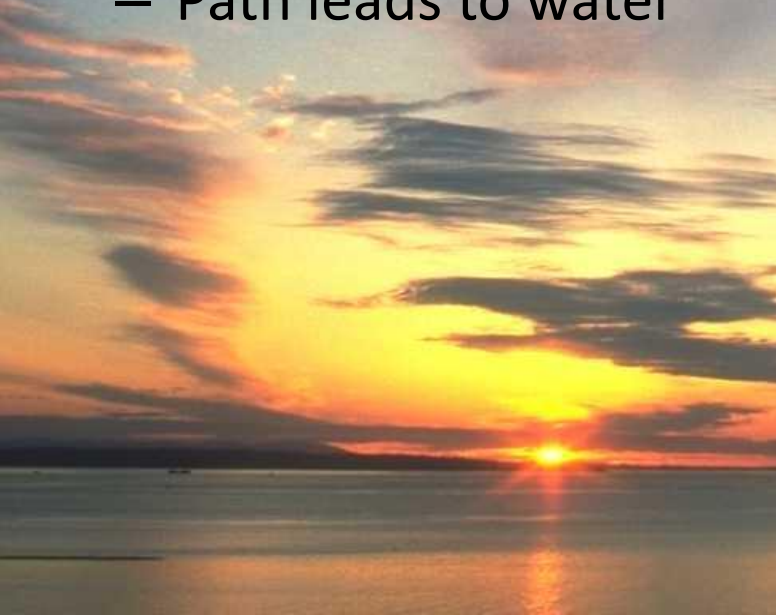


W. Carolyn



W. Carolyn

- Planters: Yes (2)
- Maint. Contract: Yes
- Bulkhead: No
- Rip Rap: Some
- Access to Bay: Yes
 - Path leads to water



W. Georgia Ruth



W. Georgia Ruth

- Planters: Yes (3)
- Maint. Contract: Yes
- Bulkhead: No
- Rip rap: Yes
- Access to Bay: No



W. Verna Jean



W. Verna Jean

- Planters: Yes (2)
- Maint. Contract: Yes
- Bulkhead: No
- Rip rap: Yes
 - Very little
- Access To Bay: Yes
 - Steps to water

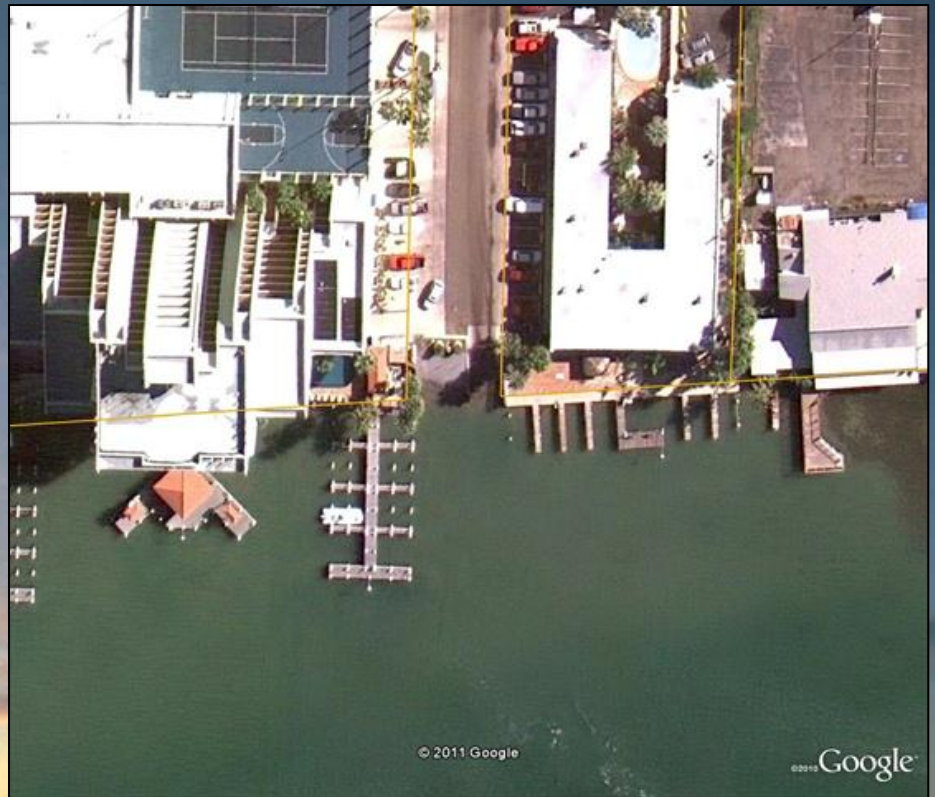


W. Polaris



W. Polaris

- Public boat ramp improved in 2010
- Public parking available on R.O.W. on the west 100 Blk of Polaris
- Planters: Yes (2)
- Maint. Contract: Yes



W. Aries



W. Aries

- Planters: Yes (2)
- Maint. Contract: Yes
- Bulkhead: No
- Rip rap: Yes



W. Capricorn



W. Capricorn

- Planters: Yes (2)
- Maint. Contract: Yes
- Bulkhead: No
- Rip rap: Yes



W. Constellation



W. Constellation

- Planters: Yes (2)
- Maint. Contract: Yes
- Bulkhead: Yes
- Rip rap: No
- Access to Bay: No



W. Mars



W. Mars

- Planters: Yes (2)
- Maint. Contract: Yes
- Bulkhead: No
- Rip rap: Yes
- Previous coastal lease has expired
- T-head pilings still in water



W. Jupiter



W. Jupiter

- Planters: Yes (2)
- Maint. Contract: Yes
- Bulkhead: Yes
- Rip Rap: No
- Access to bay: No



W. Venus



W. Venus

- Two Planters: Yes (2)
- Maint. Contract: Yes
- Bulkhead: Yes
- Rip Rap: No
- Access to bay: No
 - Thick Mangroves



W. Saturn



W. Saturn

- Two Planters: Yes (2)
- Maint. Contract: Yes
- Bulkhead: No
- Rip Rap: Yes
- Access to bay: No



W. Esperanza



W. Esperanza

- Planters: Yes (3)
- Maint. Contract: Yes
- Bulkhead: Yes
 - Cap cracking
- Rip Rap: No
- Access to bay: No



W. Hibiscus



W. Hibiscus

- Planters: Yes (2)
- Maint. Contract: Yes
- Bulkhead: No
- Rip Rap: Yes
- Access to bay: No



W. Gardenia



W. Gardenia

- Planters: Yes (2)
- Maint. Contract: Yes
- Bulkhead: No
- Rip Rap: Yes
- Access to bay:



W. Oleander



W. Oleander

- Planters: Yes (2)
- Maint. Contract: Yes
- Bulkhead: No
- Rip Rap: Yes
- Access to bay: Yes
 - Windsurfers use this as a launch



W. Lantana



W. Lantana

- Planters: Yes (2)
- Maint. Contract: Yes
- Bulkhead: Yes
 - South end of wall may need work soon
- Rip Rap: No
- Access to bay: No



W. Huisache



W. Huisache

- Planters: Yes (2)
- Maint. Contract: Yes
 - Maintained by adjacent property owners
- Bulkhead: No
- Rip Rap: Yes
- Access to bay: No



W. Mezquite



W. Mezquite

- Planters: Yes (3)
- Maint. Contract: Yes
 - Maintained by adjacent property owners
- Bulkhead: Yes
- Rip Rap: No
- Access to bay: Yes
 - Wooden ramp is not maintained nor was it installed by the City



W. Retama



W. Retama

- Planters: Yes (3)
- Maint. Contract: Yes
 - Maintained by adjacent property owners
- Bulkhead: Yes
 - Needs repair
- Rip Rap: No



W. Atol



W. Atol

- Planters: Yes (2)
- Maint. Contract: Yes
- Bulkhead: Yes
- Rip Rap: No
- Access to bay: No



W. Bahama



W. Bahama

- Planters: Yes (2)
- Maint. Contract: Yes
- Bulkhead: Yes
- Rip Rap: No
- Access to bay: No



W. Campeche



W. Campeche

- Planters: Yes (2)
- Maint. Contract: Yes
- Bulkhead: Yes
- Rip Rap: No
- Access to bay: No



W. Acapulco



W. Acapulco

- Planters: Yes (2)
- Maint. Contract: Yes
- Bulkhead: Yes
- Rip Rap: No
- Access to bay: No



W. Kingfish



W. Kingfish

- Planters: No
- Maint. Contract: No
- Bulkhead: Yes
- Rip Rap: No
- Access to bay: No
- Coastal Lease No. CE80001
 - Boat ramp and Piers
 - Sand Castle Council of Co-Owners, Inc.
 - Effective until 12/31/2012



W. Dolphin

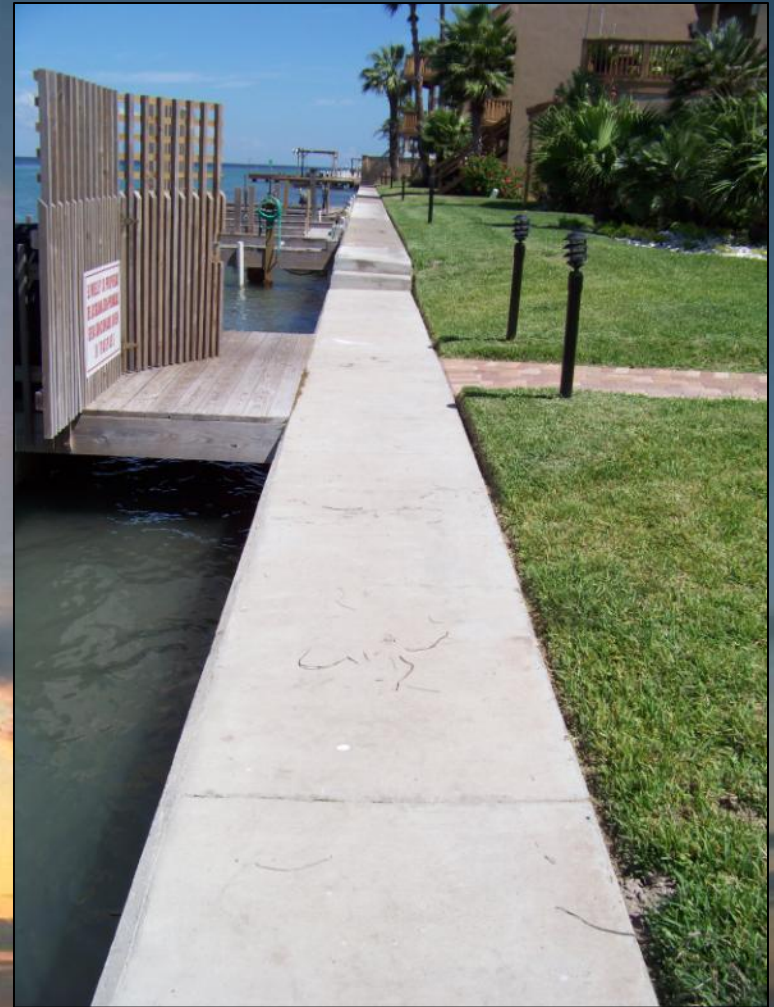


W. Dolphin

- Planters: Yes (2)
- Maint. Contract: Yes
- Bulkhead: No
- Rip Rap: Some
- Access to bay: Yes
 - Windsurfers use this as a launch



W. Redsnapper



W. Redsnapper

- Planters: No
- Maint. Contract: No
- Bulkhead: Yes
- Rip Rap: No
- Access to bay: No
- Coastal Lease No. SL20100031
 - Pier
 - La Solana Condominium Assoc.
 - Effective until 3/31/2020



W. Swordfish



W. Swordfish

- Planters: No
- Maint. Contract: No
- Bulkhead: Yes
- Rip Rap: No
- Access to bay: Private Boat Ramp
- Coastal Lease No. SL20040012
 - Boat ramp and Pier
 - Island Outfitters
 - Effective until 04/30/2014





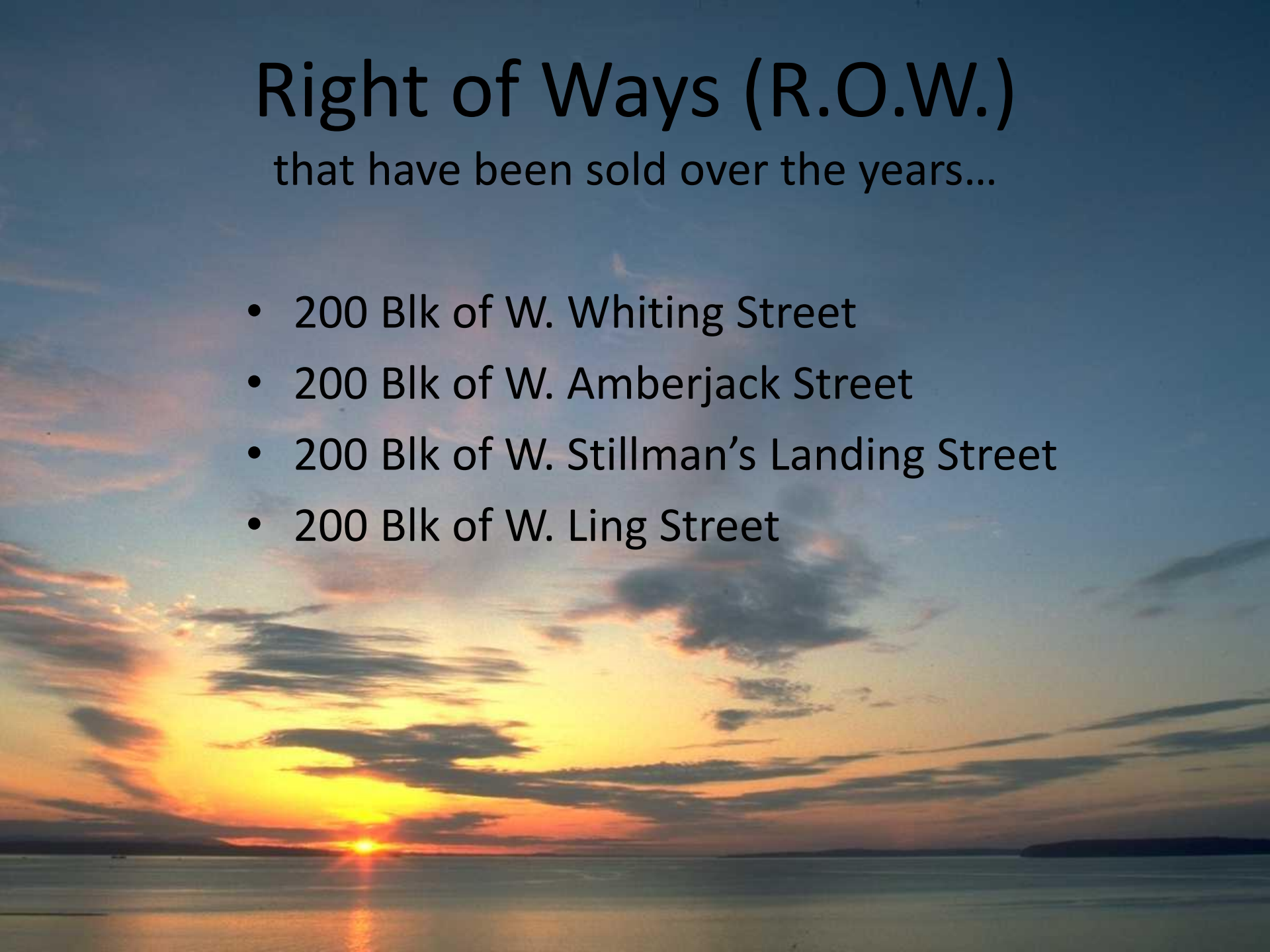
© 2011 Google

Google

Right of Ways (R.O.W.)

that have been sold over the years...

- 200 Blk of W. Whiting Street
- 200 Blk of W. Amberjack Street
- 200 Blk of W. Stillman's Landing Street
- 200 Blk of W. Ling Street



W. Marlin



W. Marlin

- Two Planters: Yes (2)
- Maint. Contract: Yes
- Bulkhead: Yes
 - Northern half is in bad condition
- Rip Rap: No
- Access to bay: No



W. Tarpon



W. Tarpon

- Planters: Yes (2)
- Maint. Contract: Yes
- Bulkhead: Yes
- Rip Rap: No
- Access to bay: No



W. Pompano



W. Pompano

- Planters: Yes (3)
 - Ideal example of Bay ending
- Maint. Contract: Yes
 - Adjacent Property Owners maintain
- Bulkhead: Yes
- Rip Rap: No
- Access to bay: No



W. Sheepshead



W. Sheepshead

- Planters: Yes (2)
- Maint. Contract: Yes
- Bulkhead: Yes
 - Holes east of the bulkhead should be filled in
- Rip Rap: No
- Access to bay: No



W. Corral



W. Corral

- Planters: Yes (2)
 - Improve Landscaping
- Maint. Contract: Yes
- Bulkhead: Yes
 - Needs repair on North side
- Rip Rap: No
- Access to bay: No



W. Palm



W. Palm

- Planters: No
- Maint. Contract: No
- Bulkhead: Yes
- Rip Rap: No
- Access to bay: Yes
 - Public Boat Ramp
 - personal watercraft launch not intended for large boats

