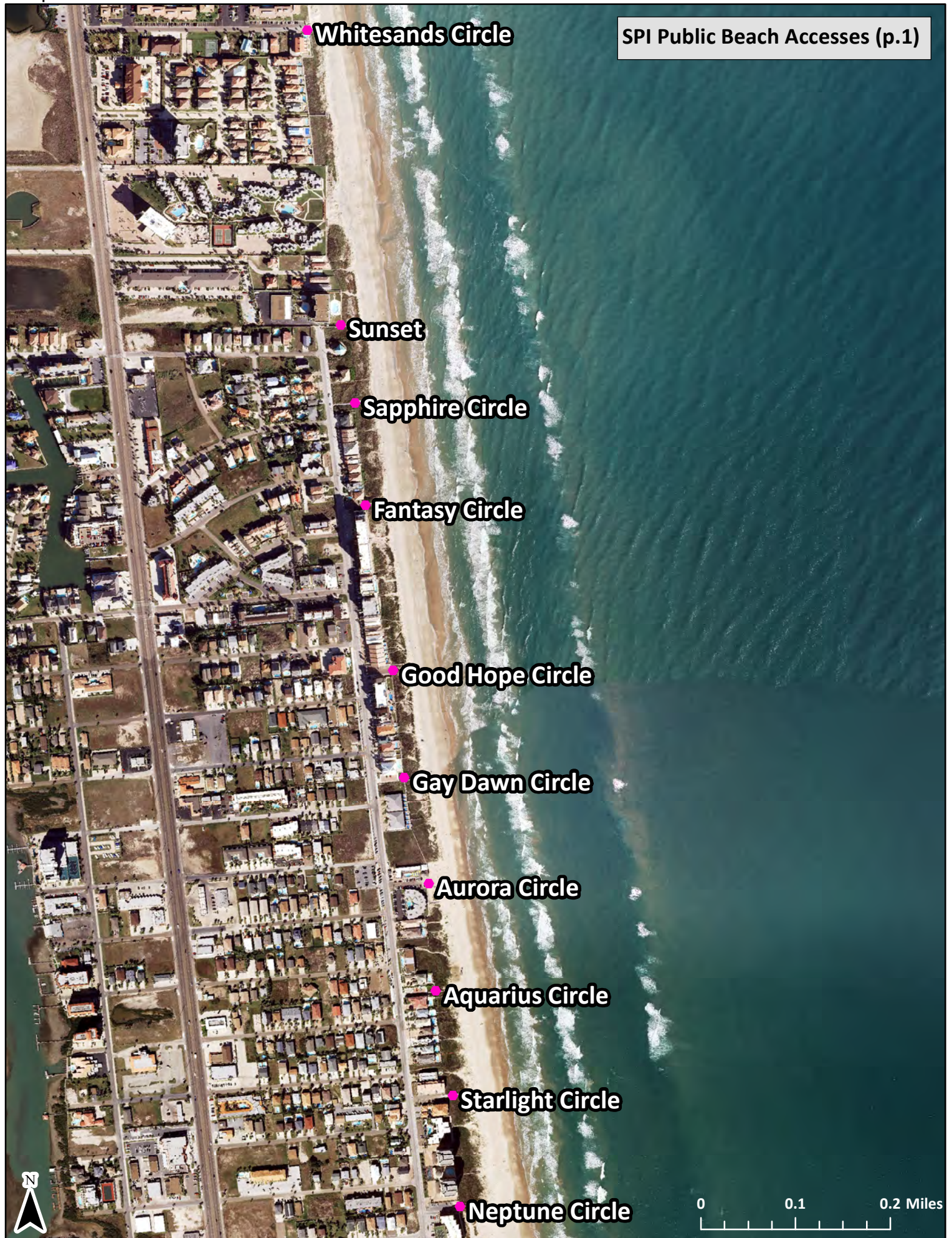


Beach Access Parking Guide

City of South Padre Island Shoreline Department

321 Padre Boulevard SPI, TX 78597

956.761.8166



Whitesands Circle

Sunset

Sapphire Circle

Fantasy Circle

Good Hope Circle

Gay Dawn Circle

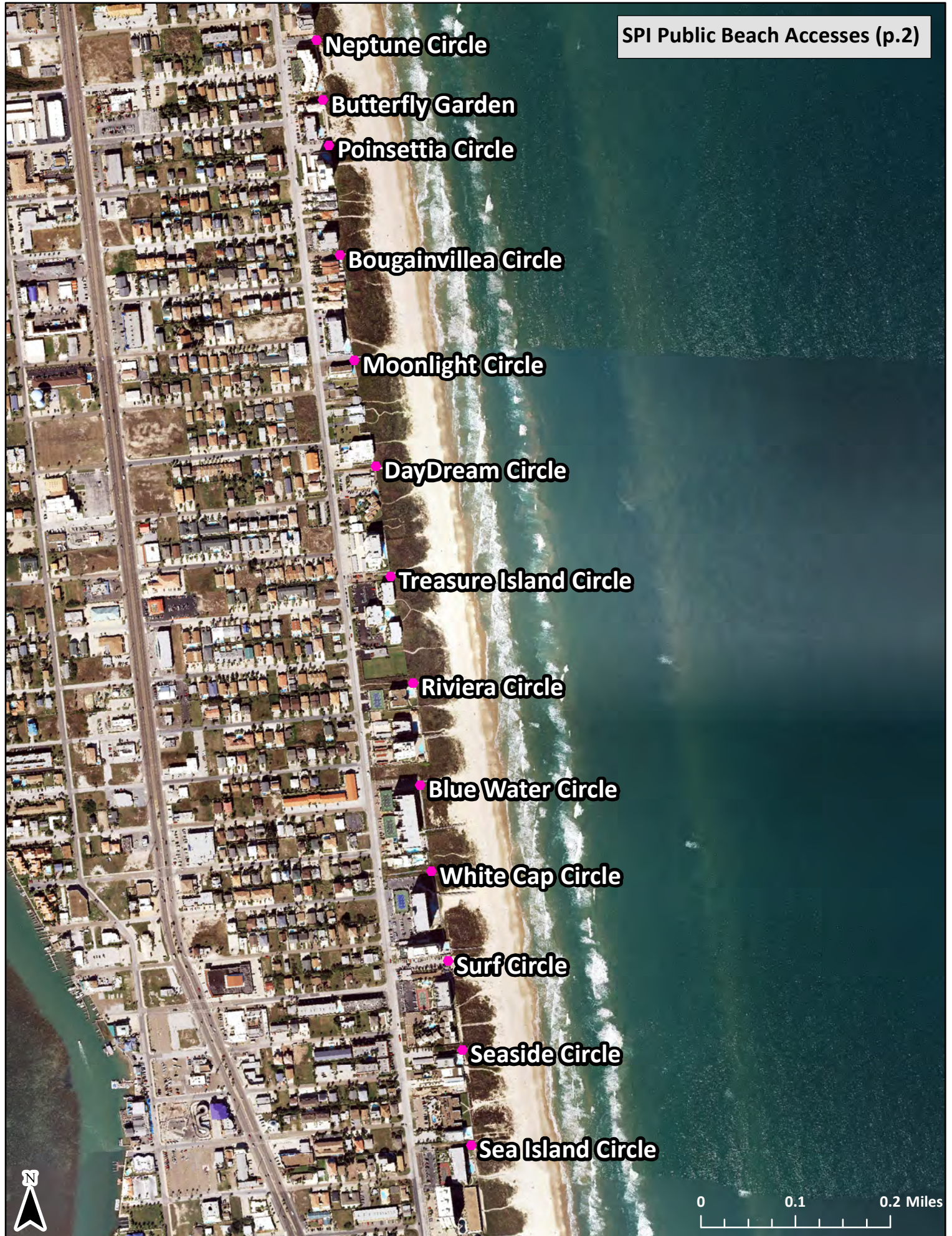
Aurora Circle

Aquarius Circle

Starlight Circle

Neptune Circle





Neptune Circle

Butterfly Garden

Poinsettia Circle

Bougainvillea Circle

Moonlight Circle

DayDream Circle

Treasure Island Circle

Riviera Circle

Blue Water Circle

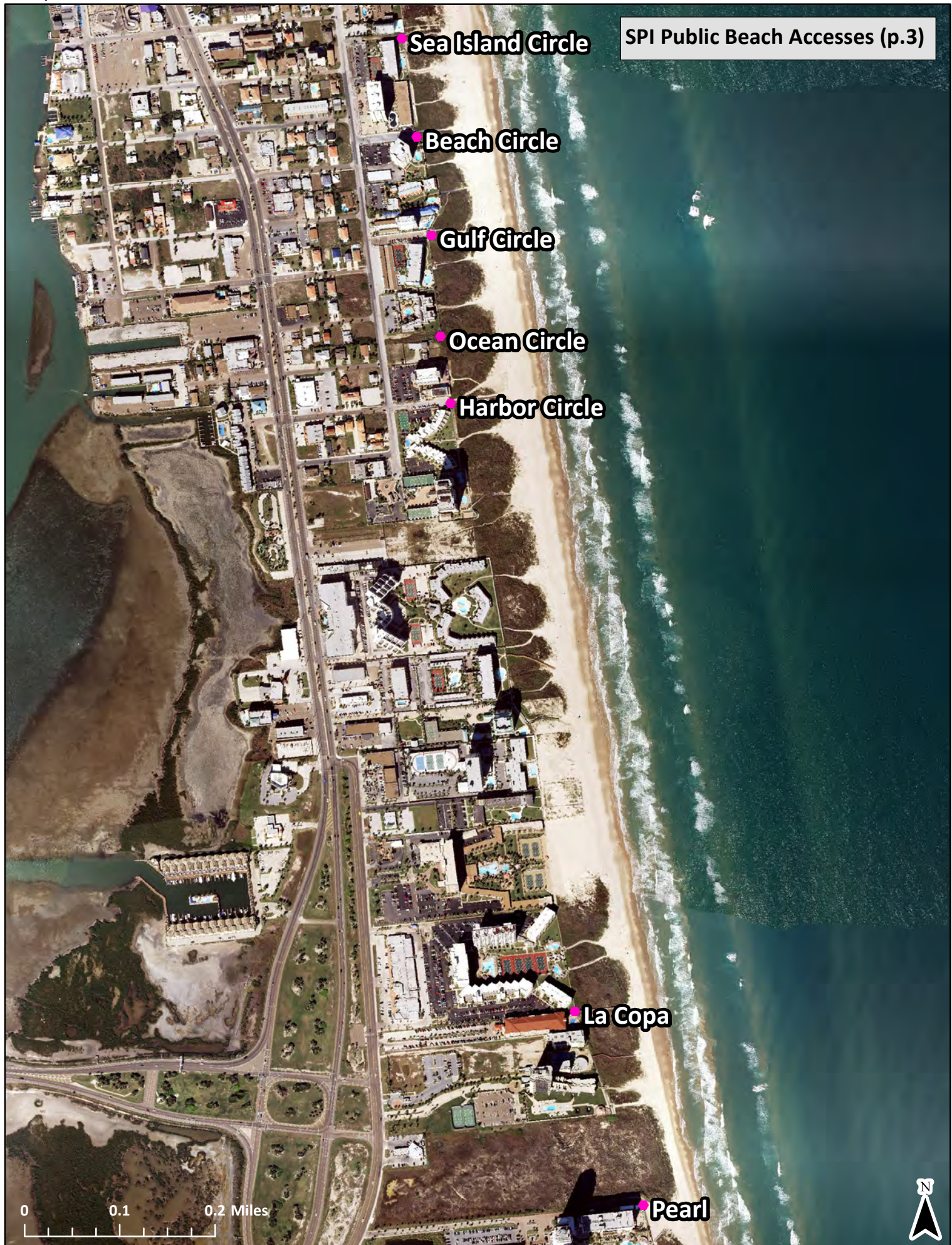
White Cap Circle

Surf Circle

Seaside Circle

Sea Island Circle





Sea Island Circle

Beach Circle

Gulf Circle

Ocean Circle

Harbor Circle

La Copa

Pearl

0 0.1 0.2 Miles





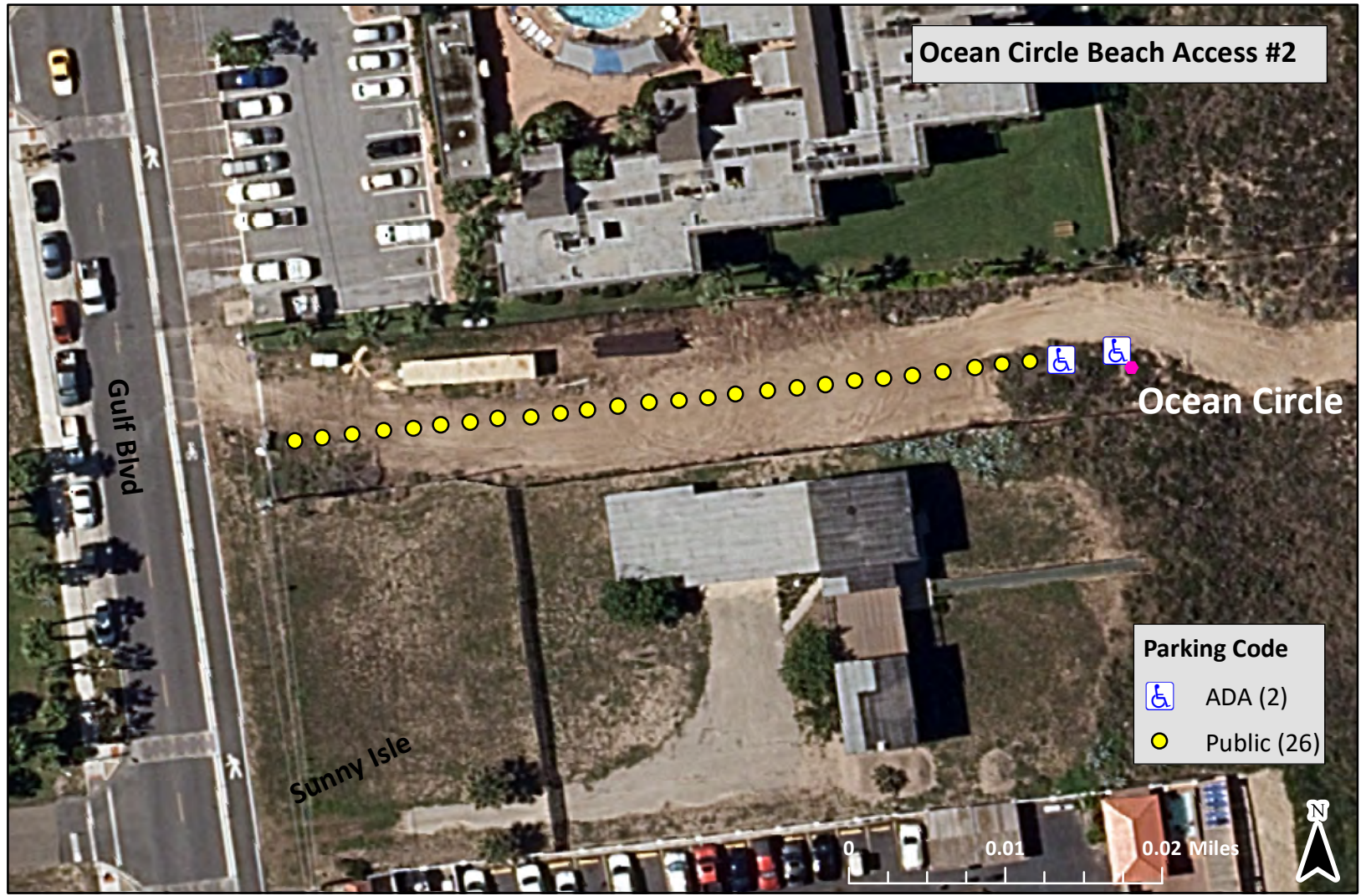
* All parking spaces are within 2000 feet of the Pearl Beach Access to the east
* A new parking lot, crosswalk leading to the Pearl Beach Access, and entire building have been added to this plot since this aerial image was taken in 2013 (thumbnail of more recent aerial image provided for reference)



* All parking spaces are within 2000 feet of the La Copa Beach Access to the east

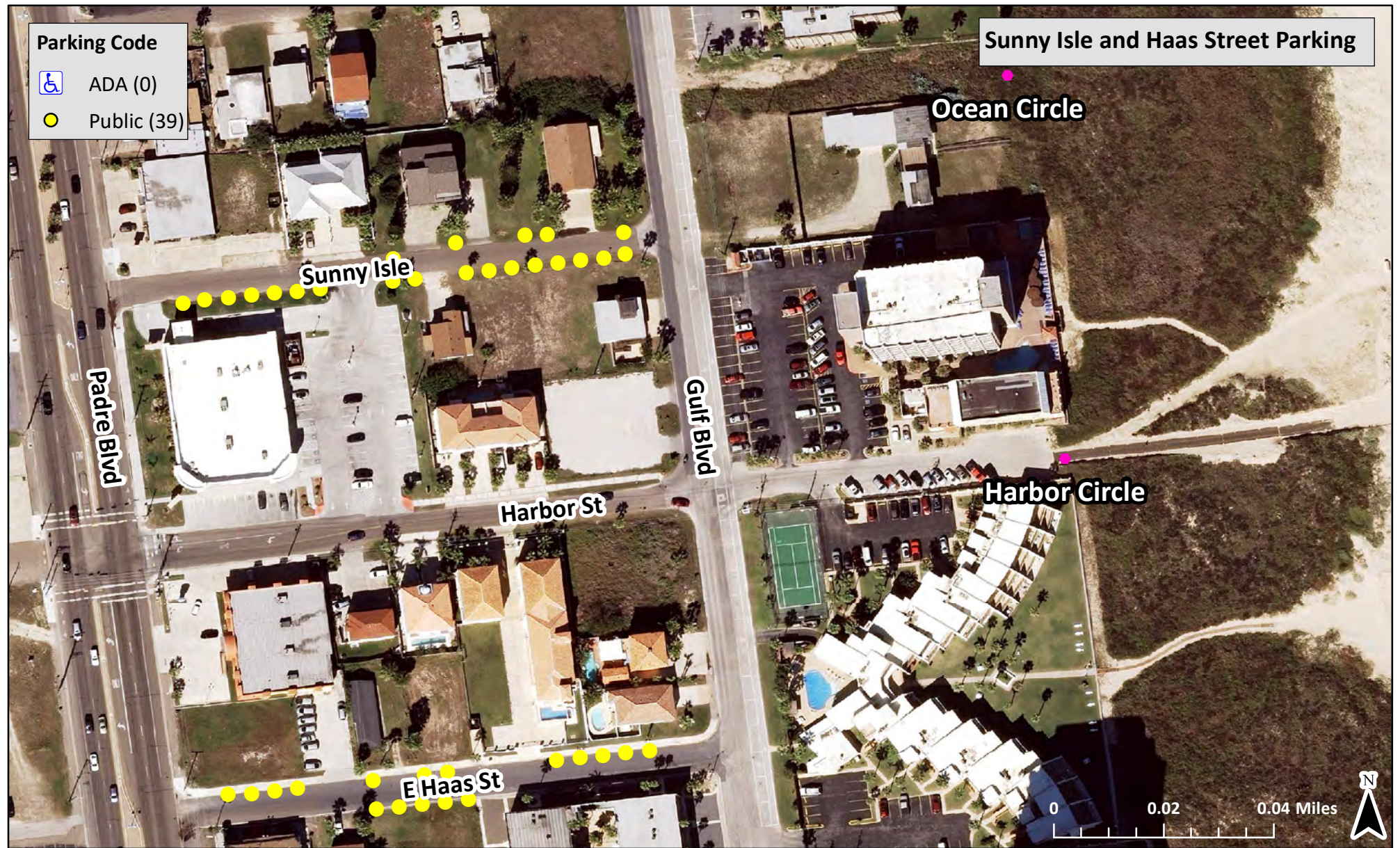
Map F





* Access has been improved and completed since the aerial photograph was taken

Map H





* Access may have 2-3 additional spaces added to northwest corner, adjacent to Gulf Blvd (aerial image shows 3 white vehicles parallel-parked in unofficial public parking)











* Access has been improved and completed since the aerial photograph was taken



* Some vehicles in aerial image may have been illegally parked or aerial image may have been taken before ADA spots were added



Gulf Boulevard Parking from Ling Street to Swordfish

E Swordfish St

E Whiting St

E Amberjack St

E Pike St



E Ling St

Gulf Blvd

Surf Circle

Seaside Circle

Parking Code

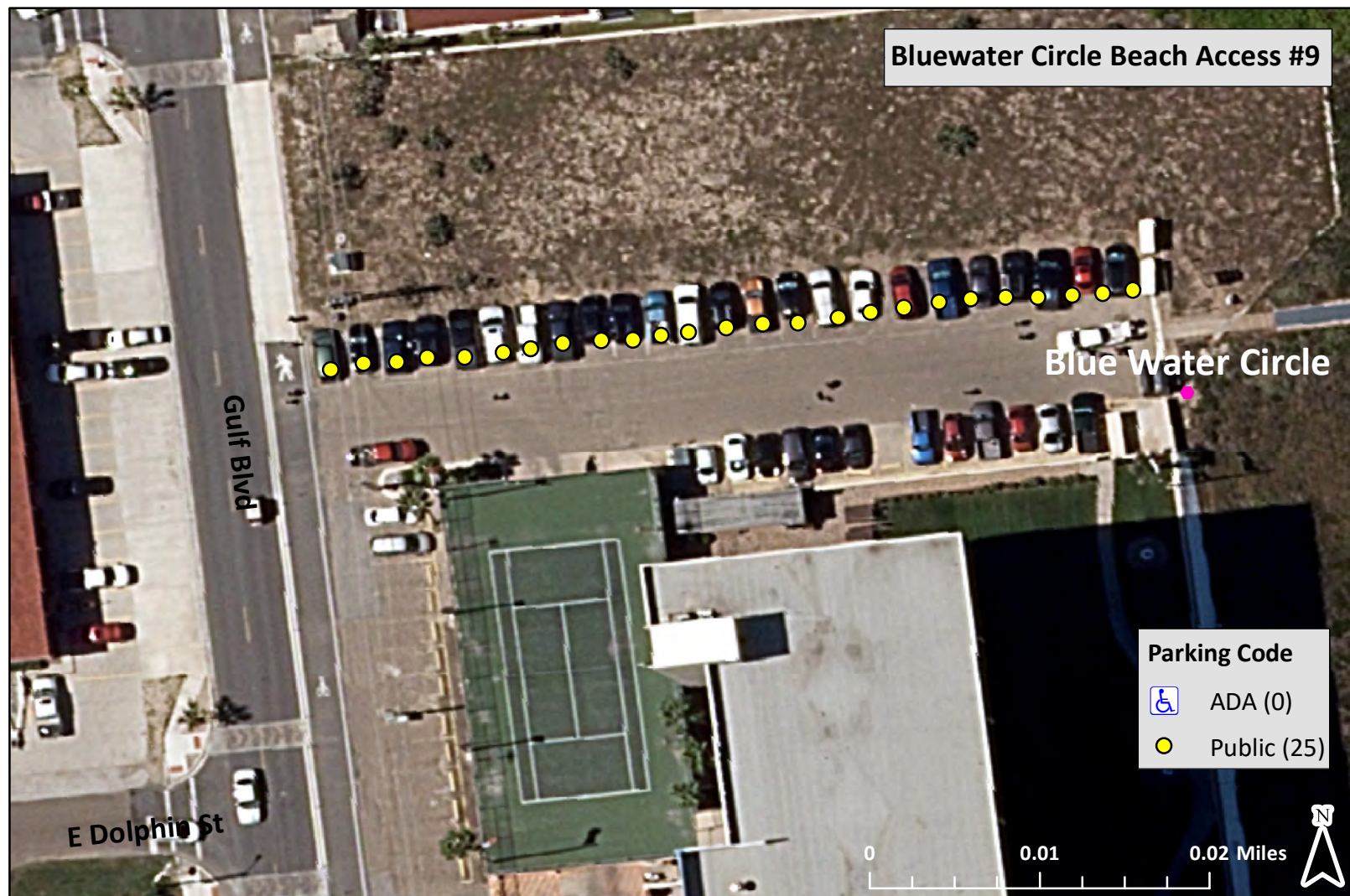
-  ADA (0)
-  Public (21)



0

0.05

0.1 Miles



Gulf Boulevard Parking from Red Snapper St to Acapulco St



Riviera Circle

E Acapulco St

E Kingfish St

Gulf Blvd

E Dolphin St

E Red Snapper St



Blue Water Circle



0

0.05

0.1 Miles

Parking Code	
	ADA (1)
	Public (12)

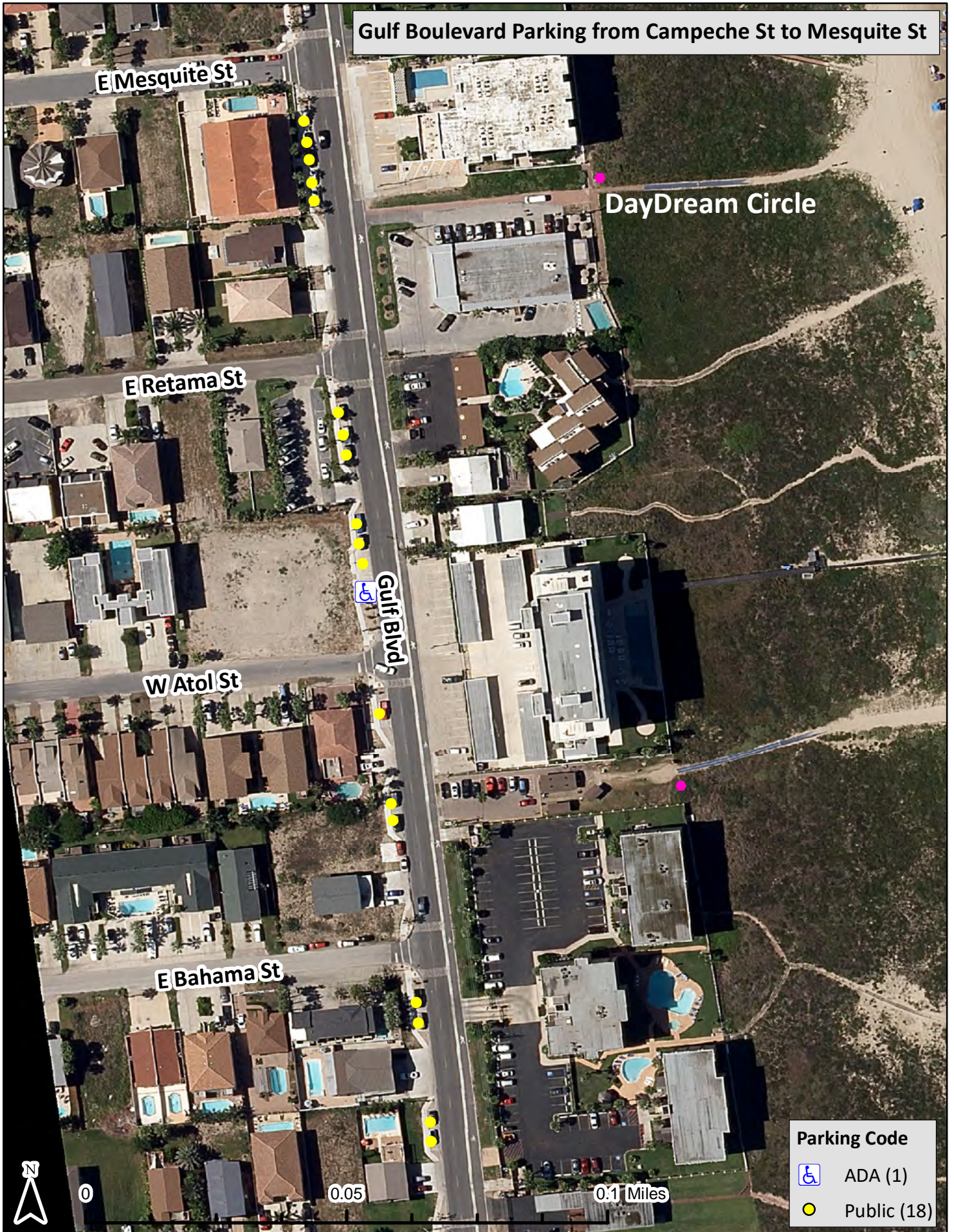


Map T



Map U

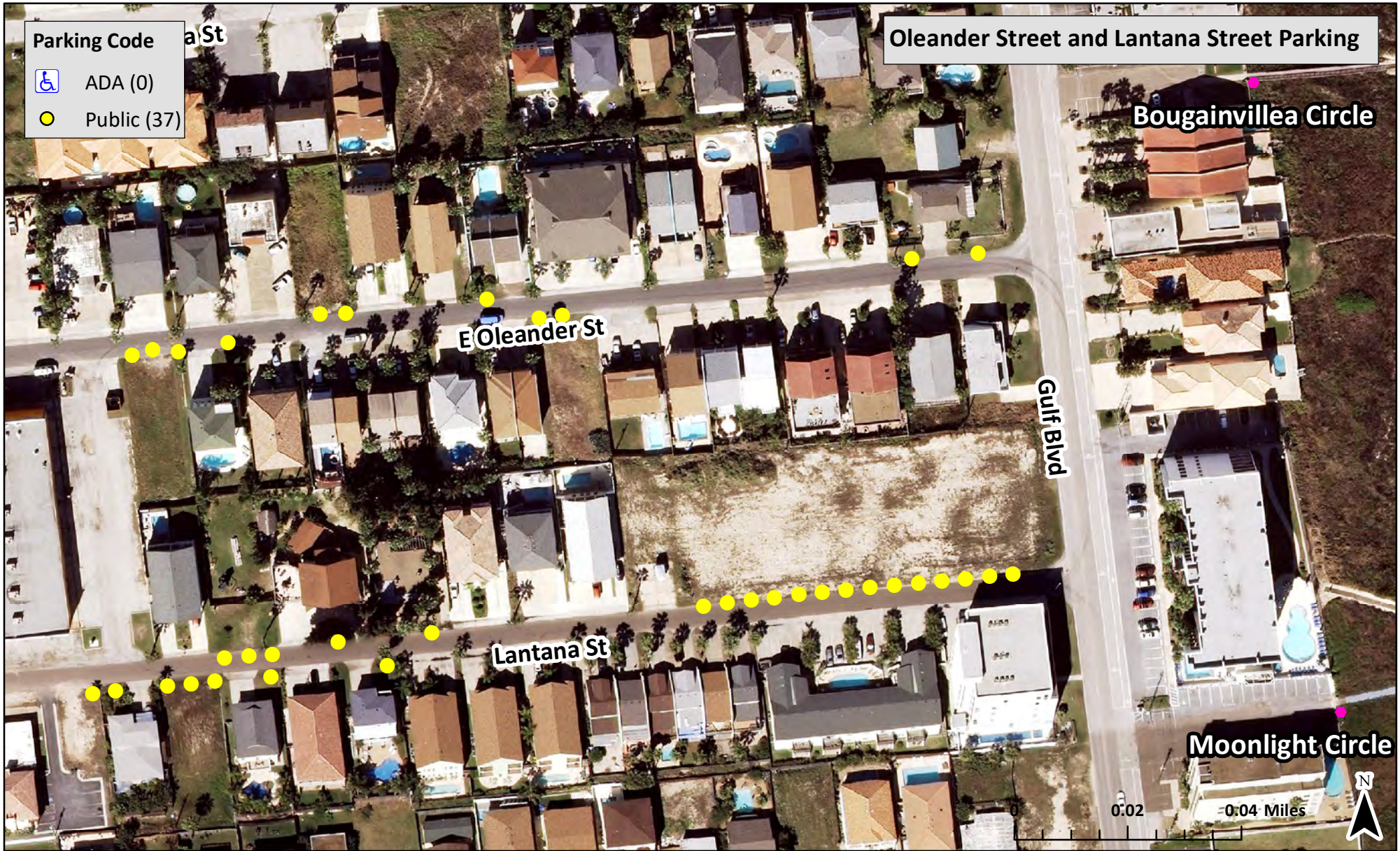






* Access has been improved and completed since the aerial photograph was taken

Map X





* Some vehicles may have been illegally parked when aerial photograph was taken

Gulf Boulevard Parking from Huisache St to Gardenia St



E Gardenia St

E Oleander St

Lantana St

E Huisache St

Bougainvillea Circle

Moonlight Circle



Gulf Blvd

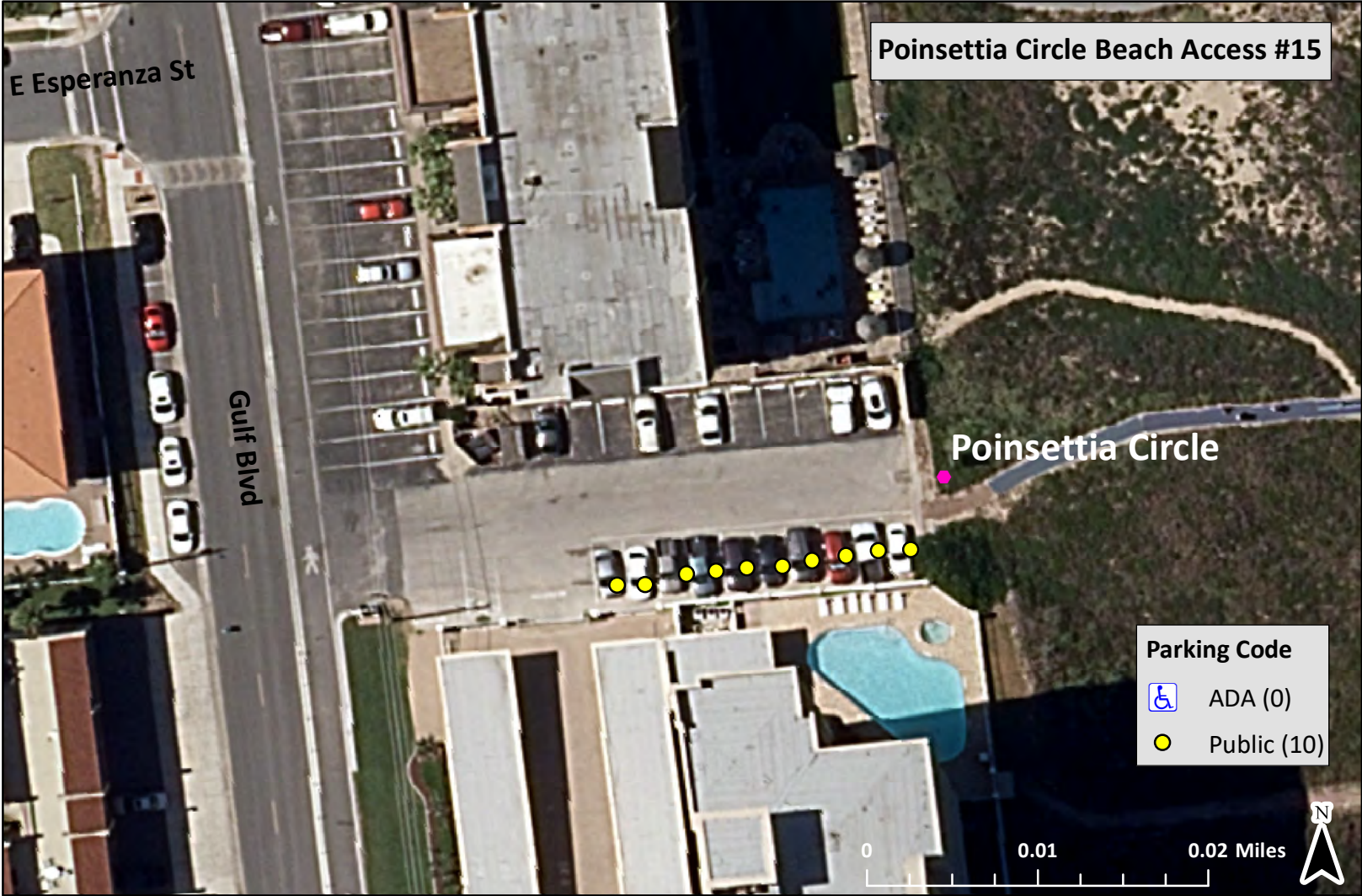


0

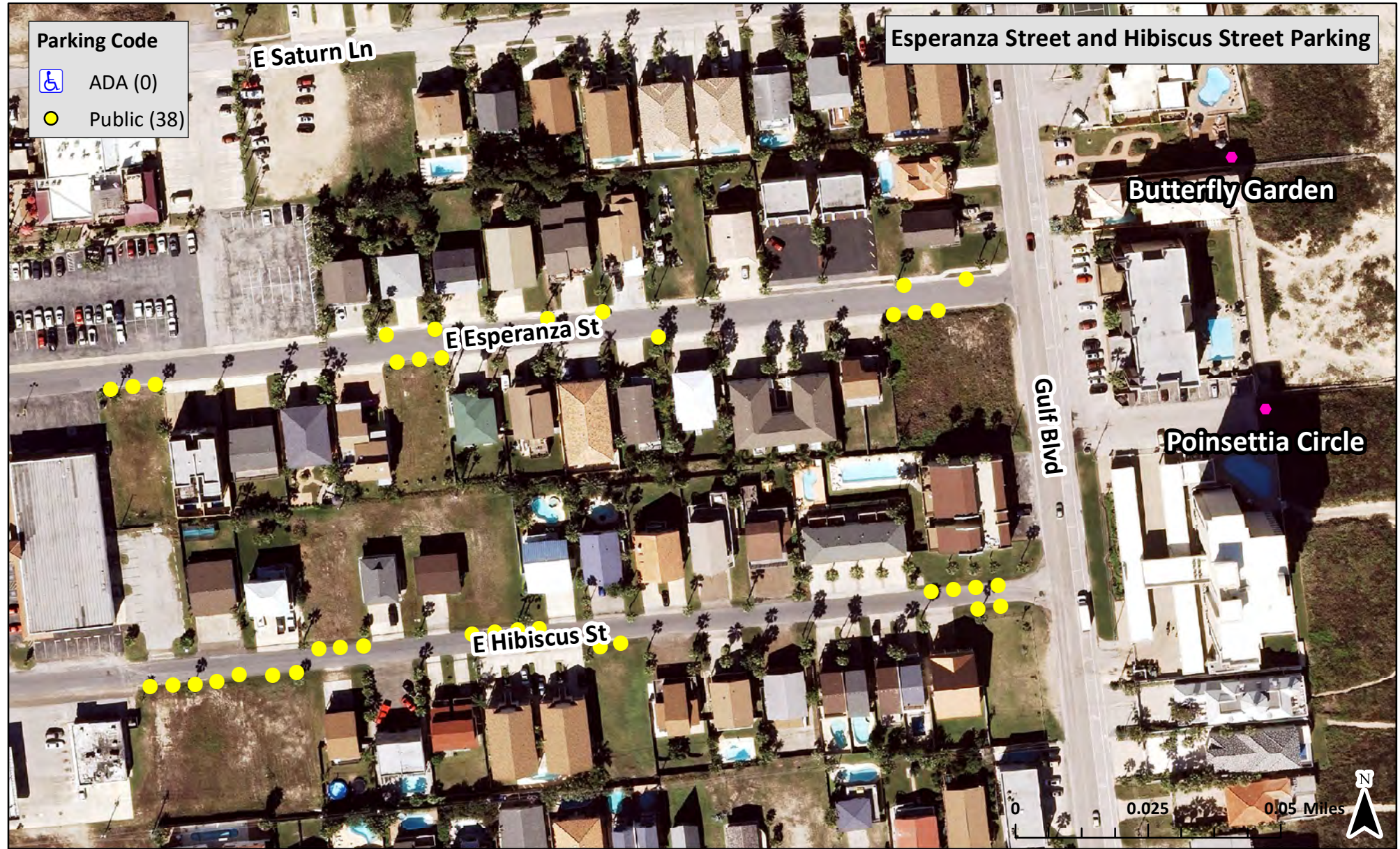
0.05

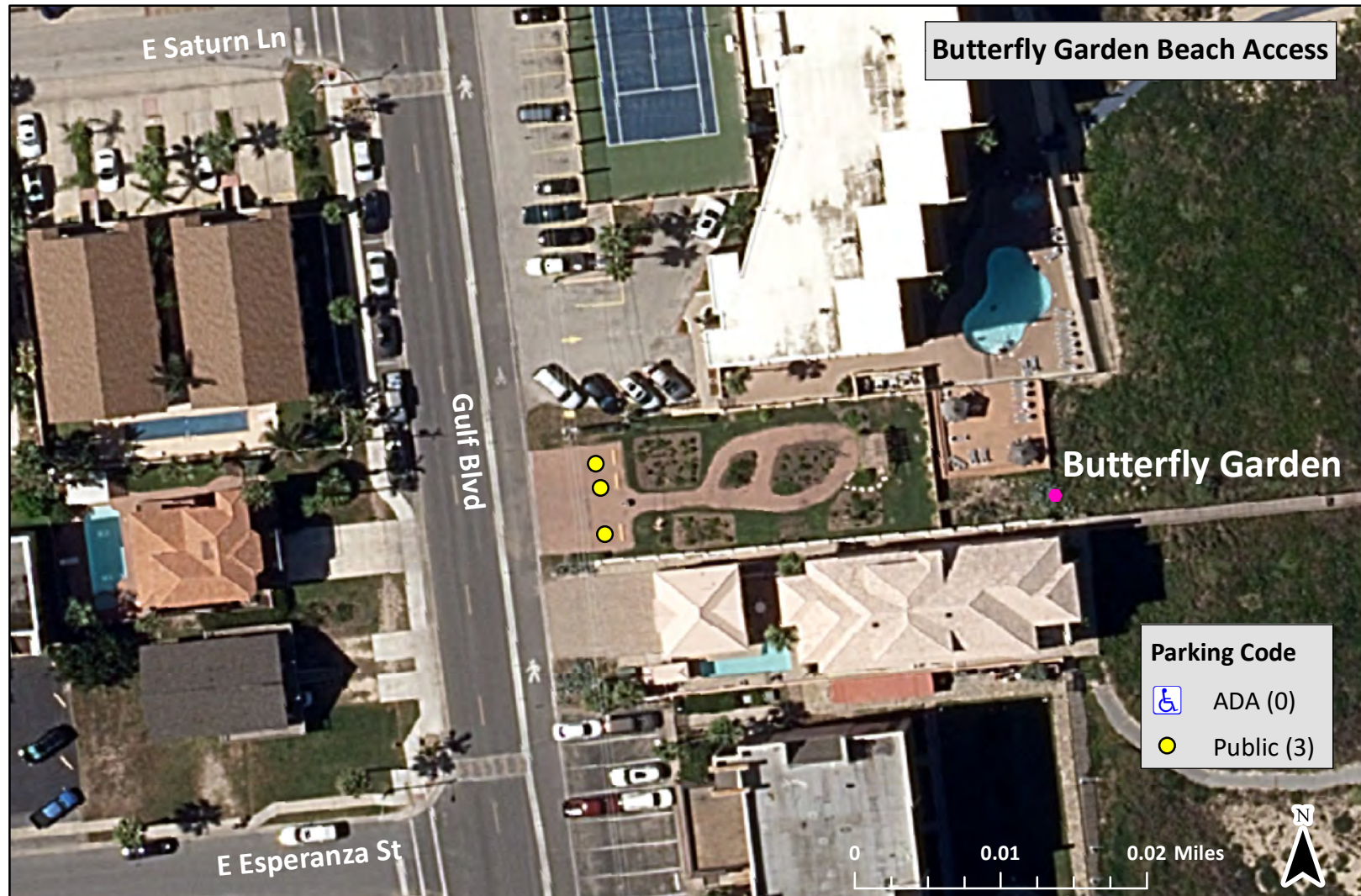
0.1 Miles

Parking Code	
	ADA (0)
	Public (27)

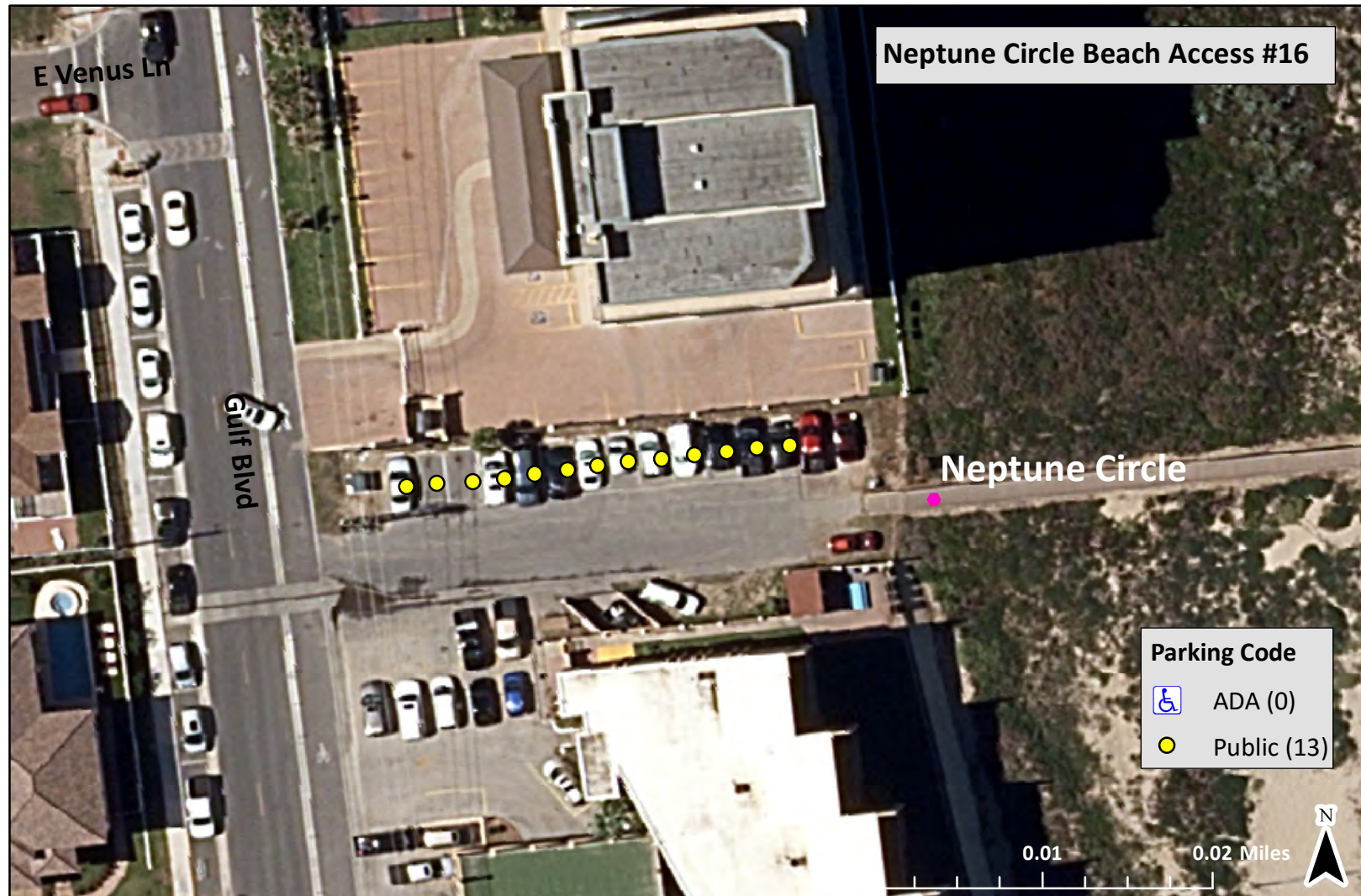


Map 2





* Access will be improved and complete by October 2019



* Some vehicles may have been illegally parked when aerial photograph was taken

Map 5



Gulf Boulevard Parking from Hibiscus St to Venus Ln



E Venus Ln

E Saturn Ln

E Esperanza St

E Hibiscus St

Neptune Circle

Butterfly Garden

Poinsettia Circle

Gulf Blvd



0

0.05

0.1 Miles

Parking Code



ADA (0)



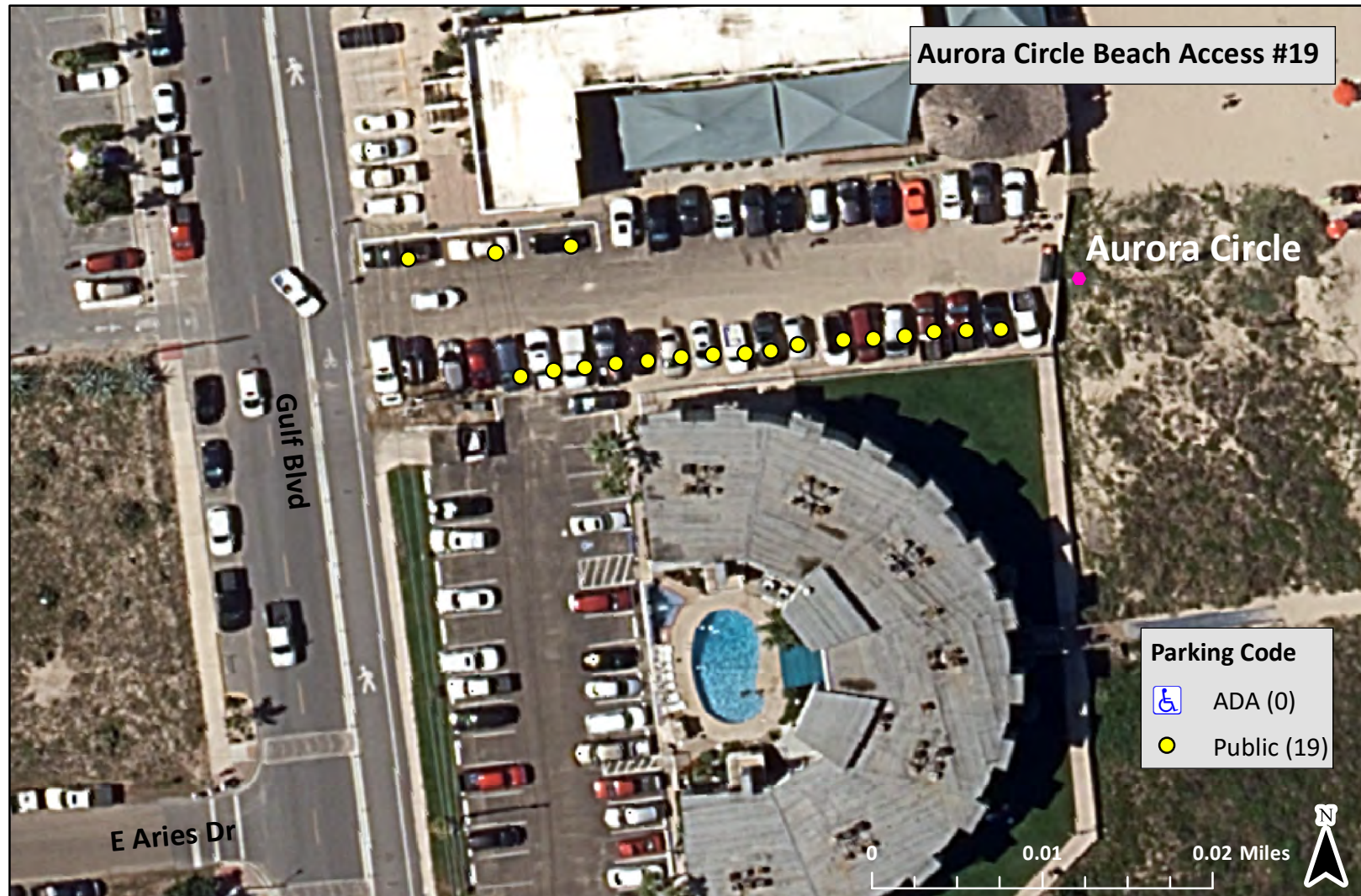
Public (24)





Gulf Boulevard Parking from Jupiter Ln to Capricorn Dr





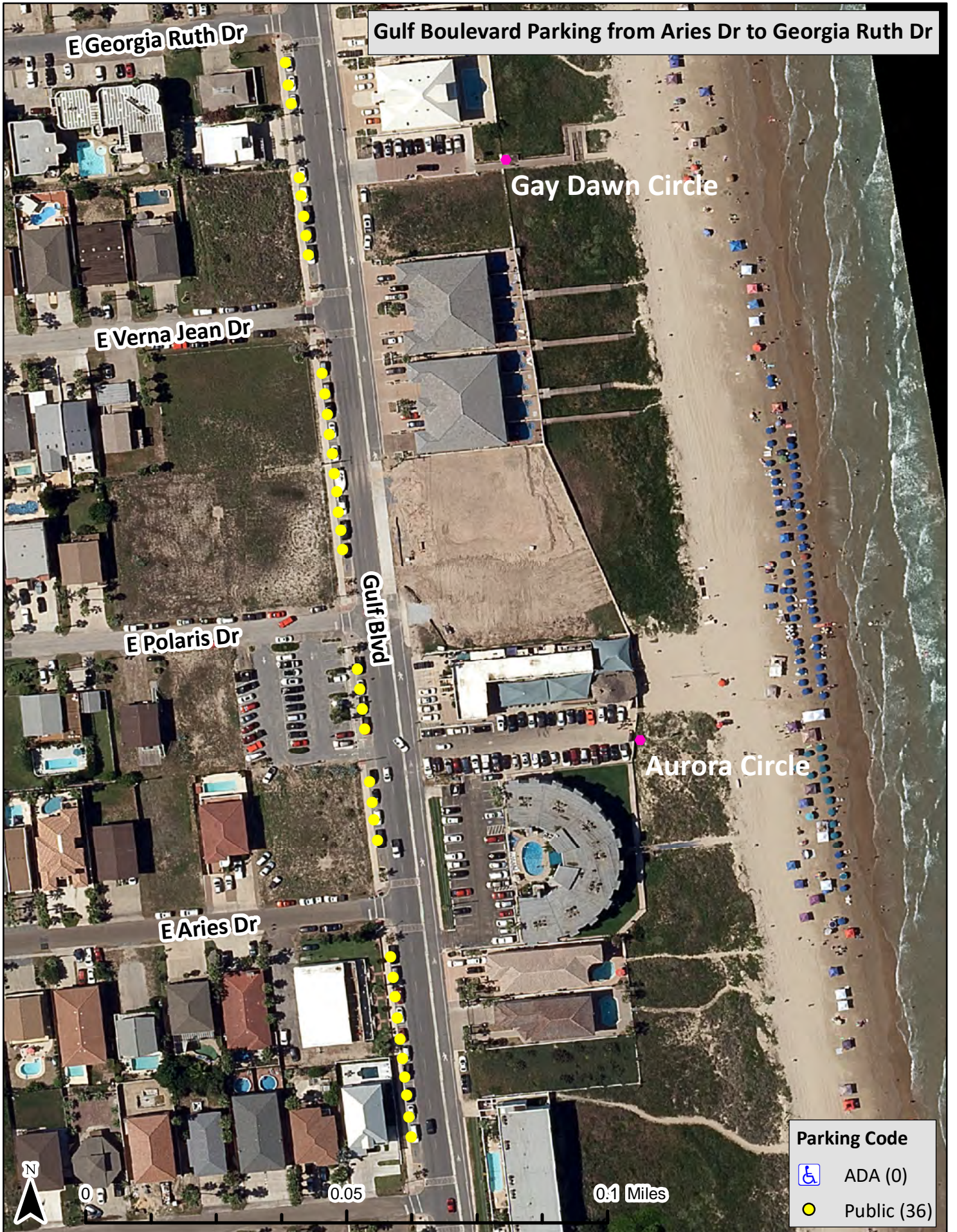
* Access may have 2 additional spaces added to southwest corner, adjacent to Gulf Blvd
(aerial image shows several vehicles parked in unofficial public parallel parking)

Map 11

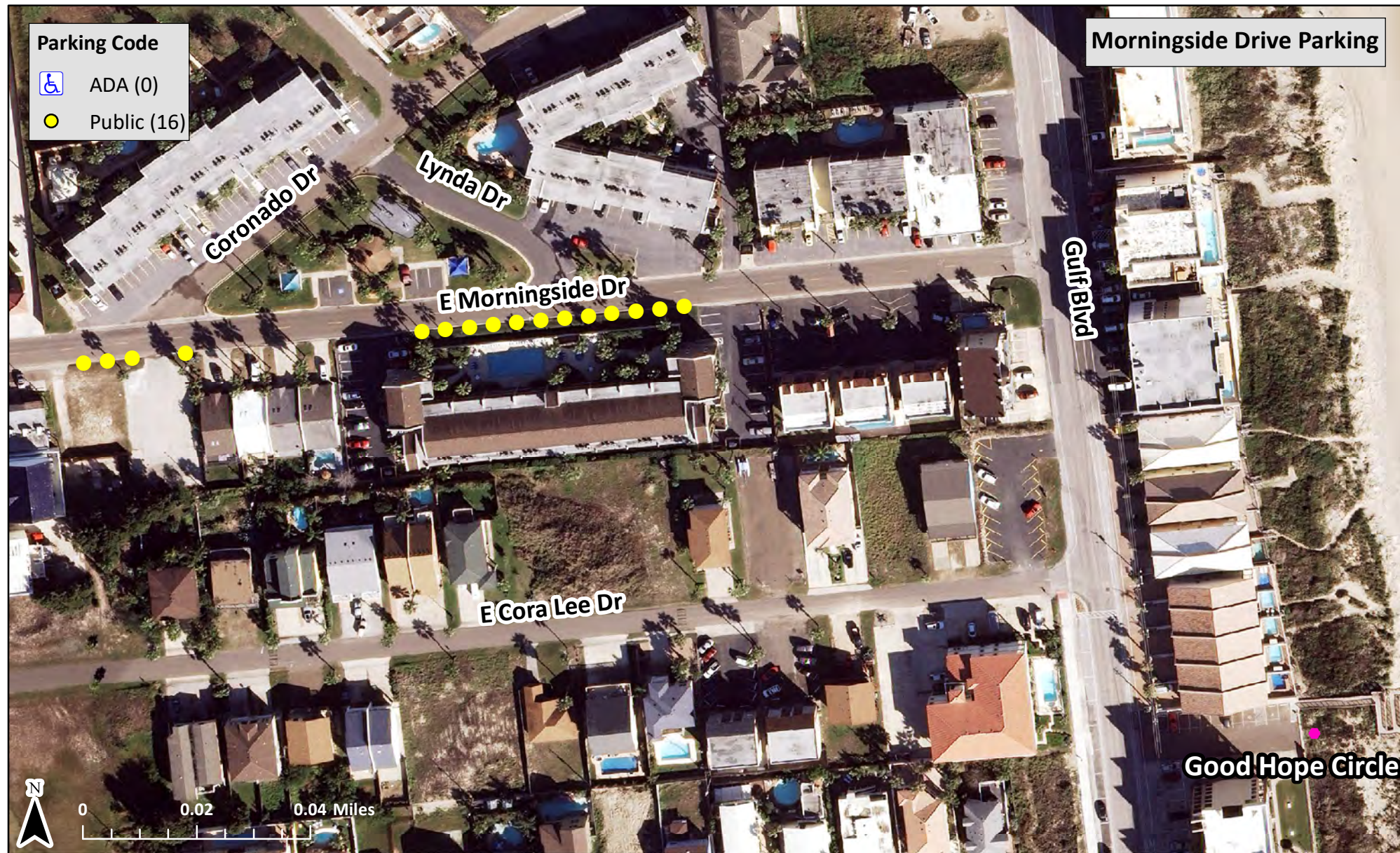


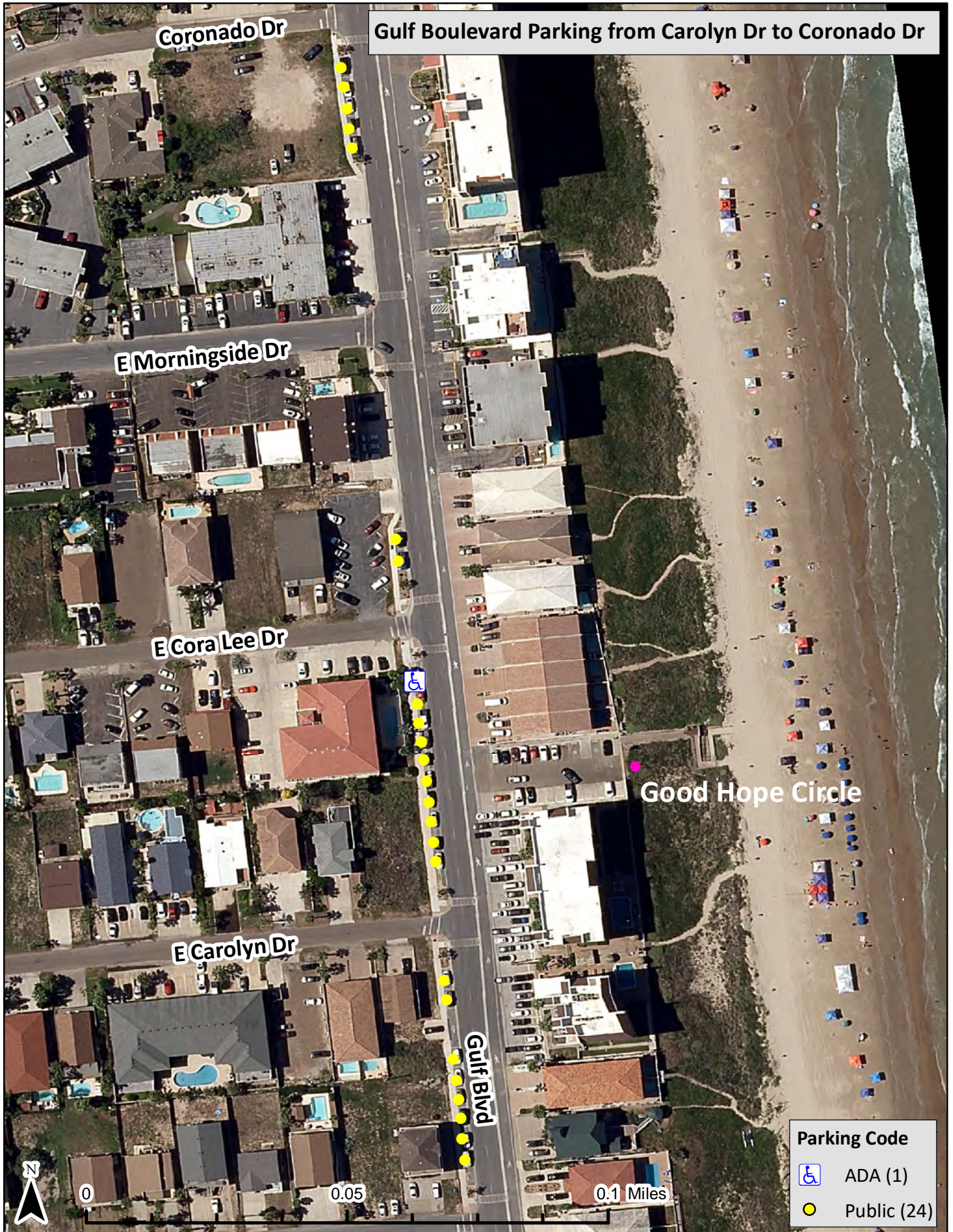


* Some vehicles may have been illegally parked when aerial photograph was taken



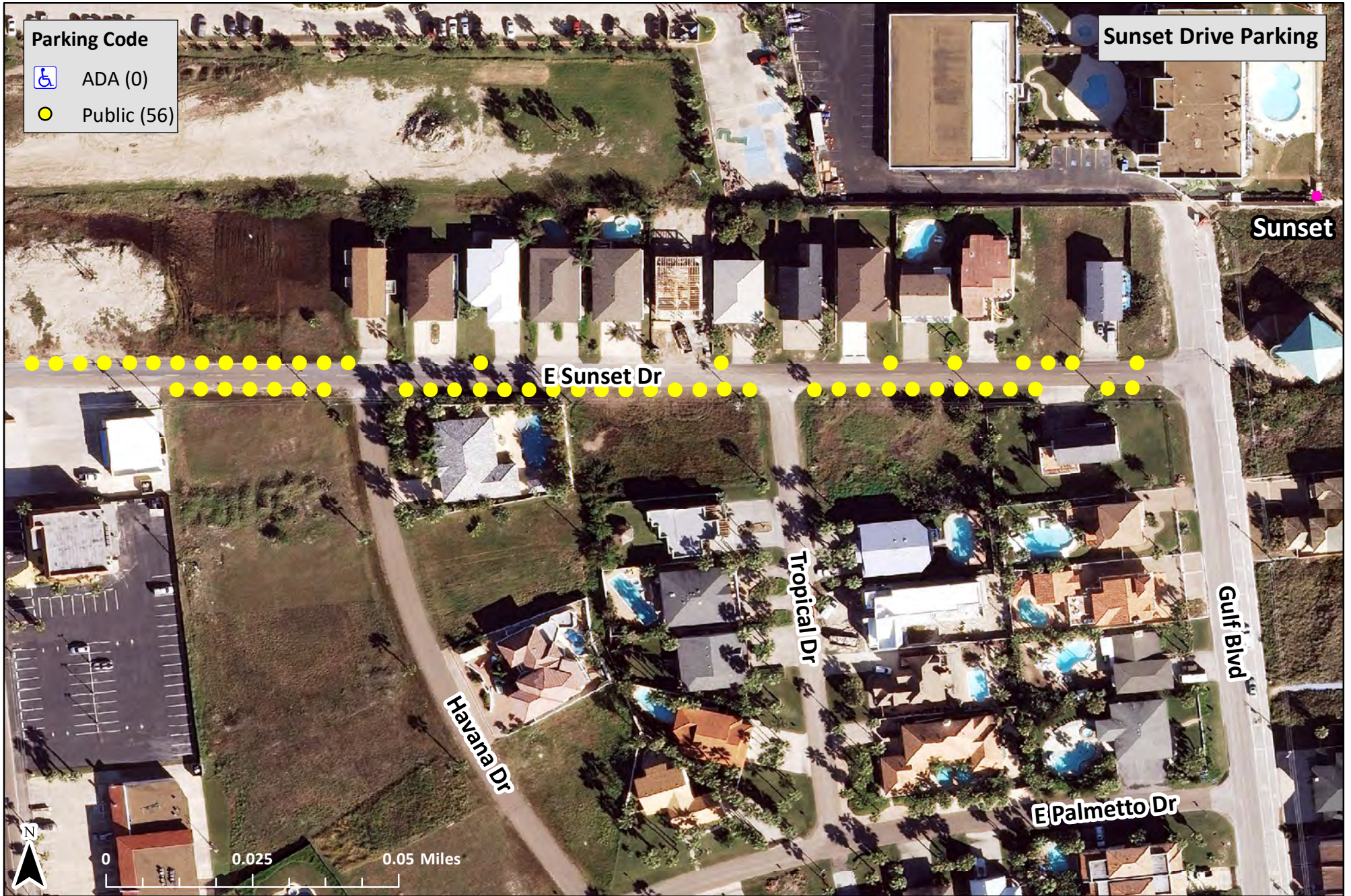


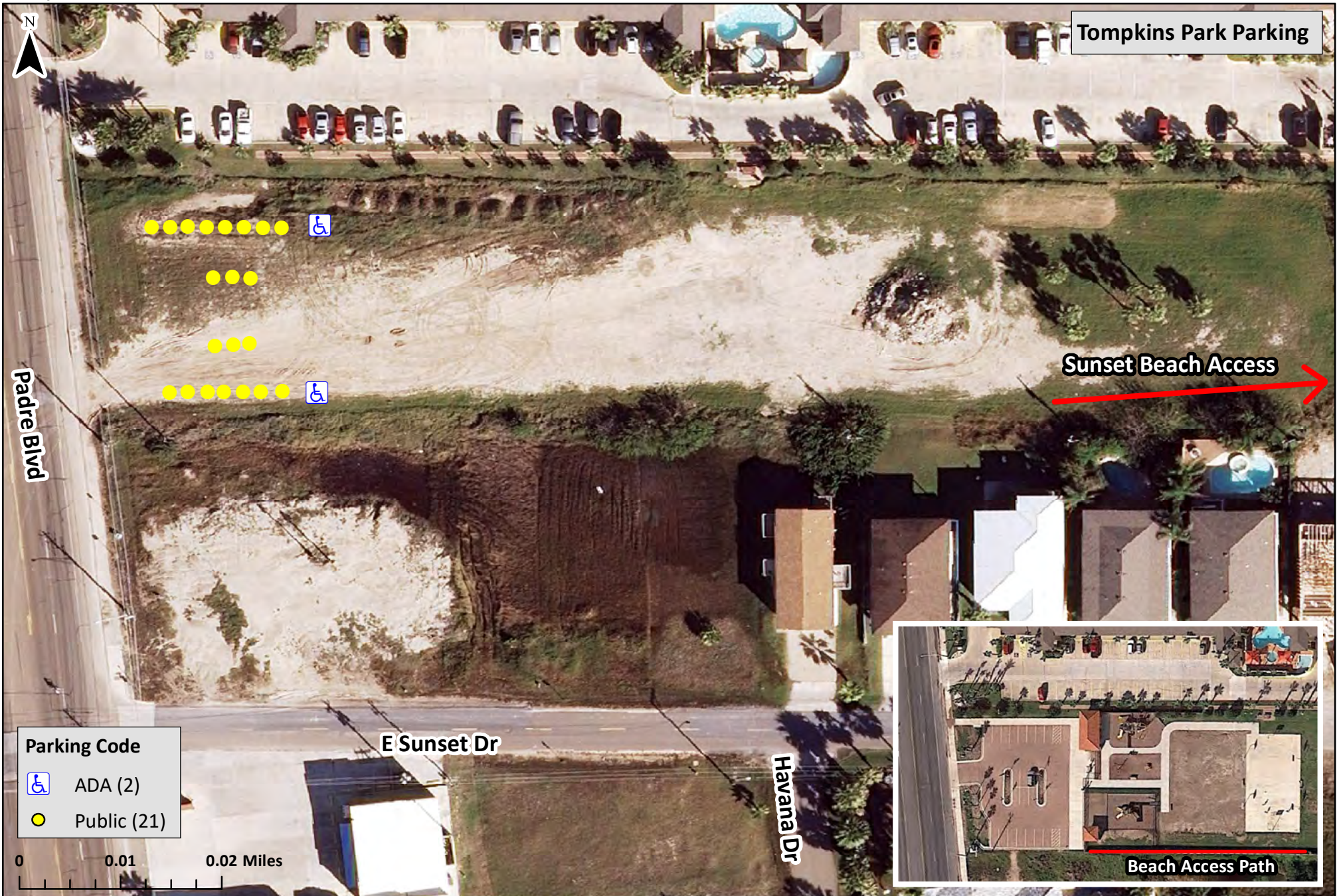






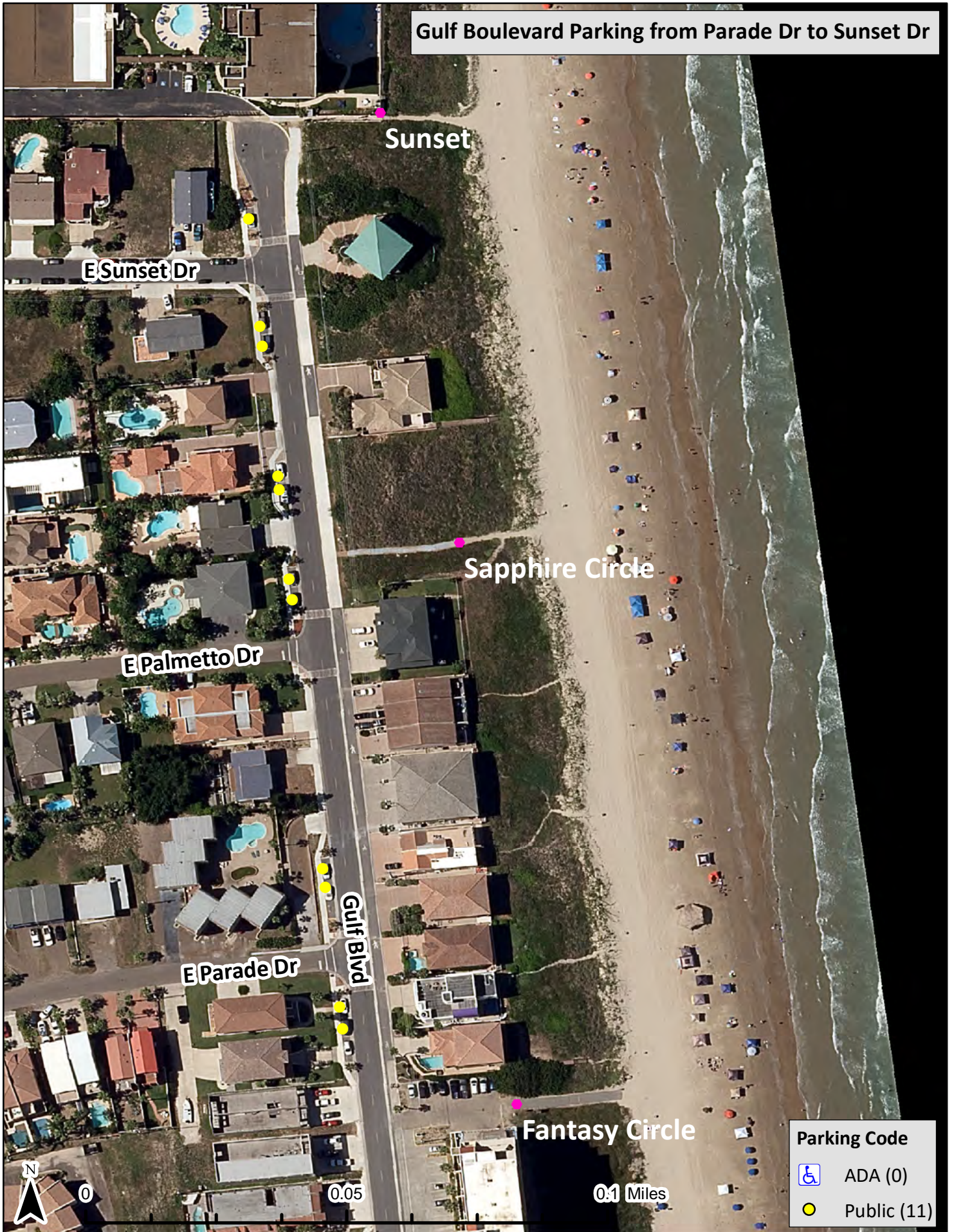
Map 18







* All parking spaces are within 2000 feet of the Sunset Beach Access to the east
* A new parking lot, amenities, and full length path to beach access have been added to this plot since this aerial image was taken in 2013 (thumbnail of more recent aerial image provided for reference)

Gulf Boulevard Parking from Parade Dr to Sunset Dr



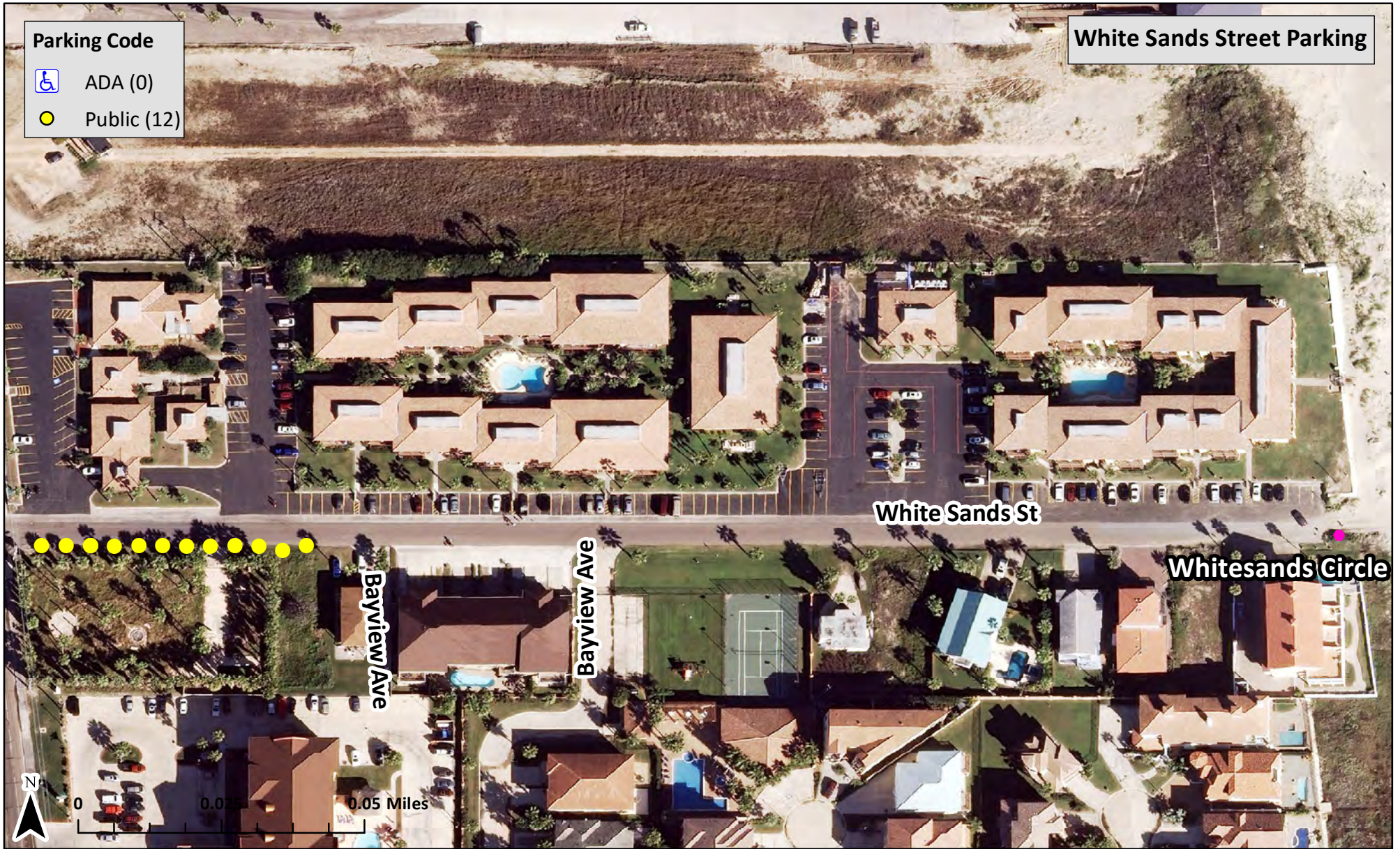
Parking Code	
	ADA (0)
	Public (11)

Parking Code

 ADA (0)

 Public (12)

White Sands Street Parking



White Sands St

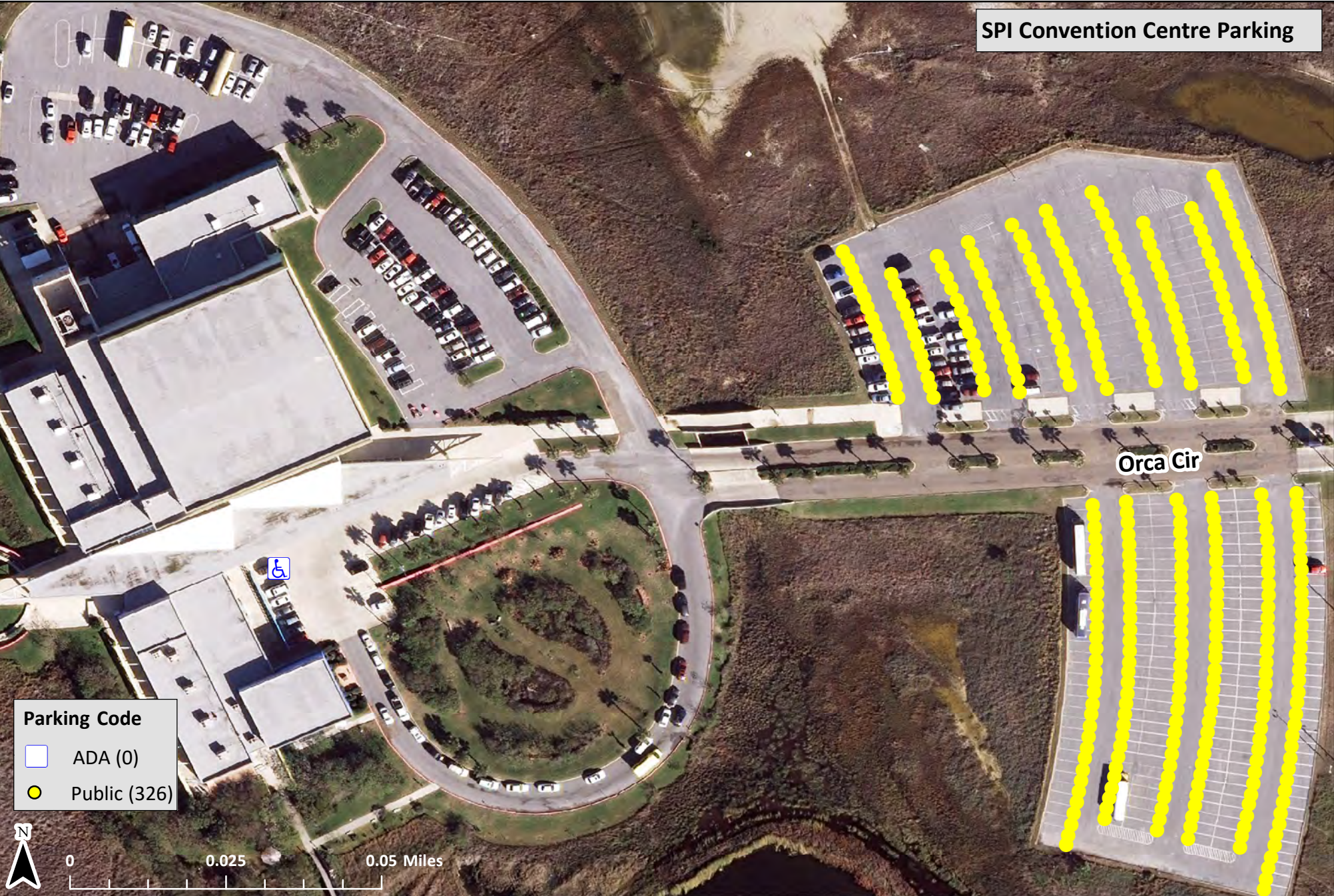
Whitesands Circle

Bayview Ave

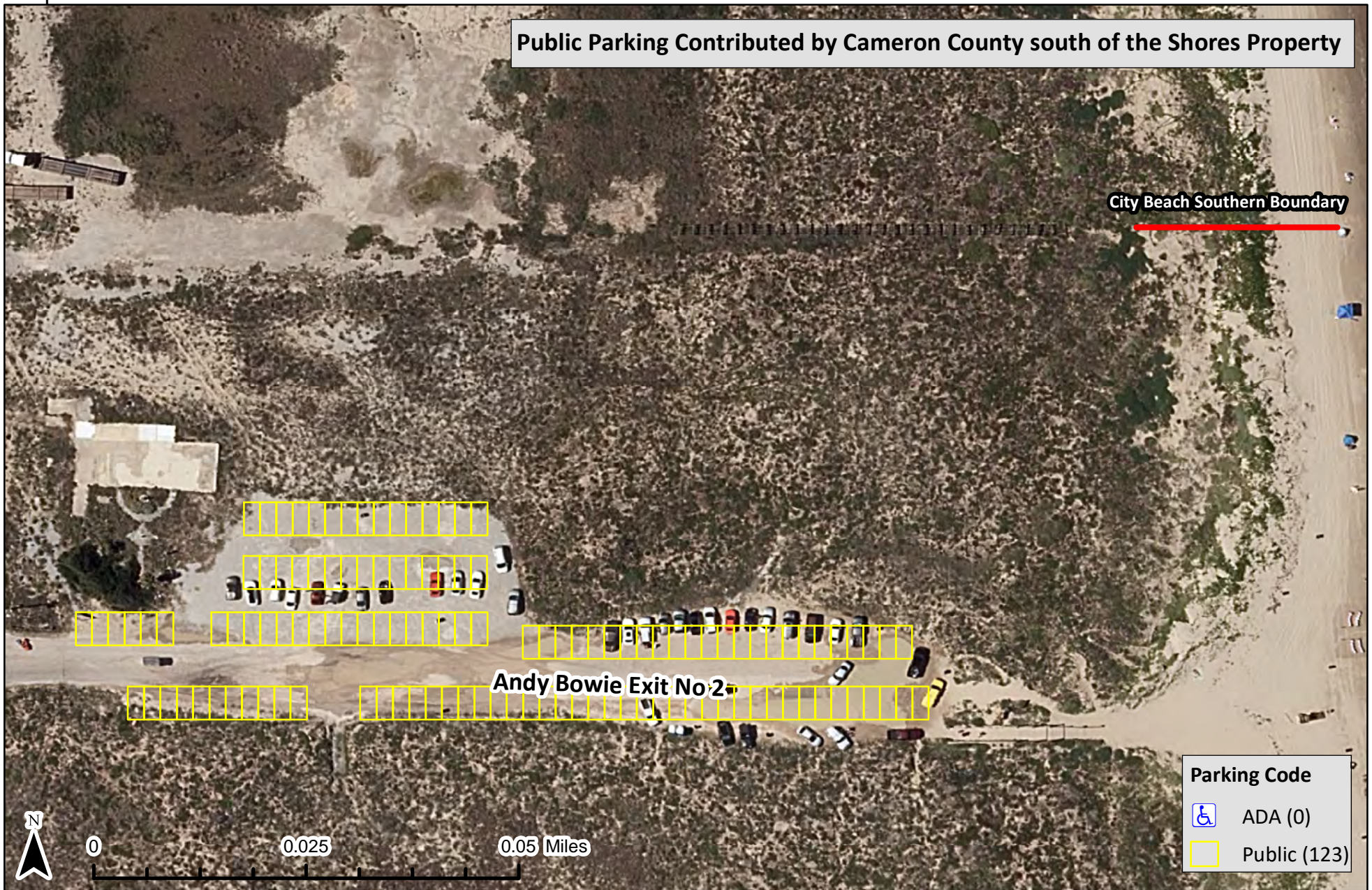
Bayview Ave

0 0.02 0.05 Miles

N



Public Parking Contributed by Cameron County south of the Shores Property



This map depicts a rough sketch of optimal parking at Beach Access 3 in Andie Bowie Park. Each yellow rectangle represents one standard 9 foot by 20 foot parking space. Isles between rows of parking spaces are, at minimum, 12 feet wide. Isles that may require two-way traffic are, at minimum, 17 feet wide. Although this parking area is within county boundaries, it provides reasonable access to the City beach directly north of the access with a distance of approximately 1000 feet from western-most parking spaces to the southern boundary of the City beach.